

find your
DANCE

*Pumpers
Dancewear Catalog
2019-20*





See more
online!
pumpers.com

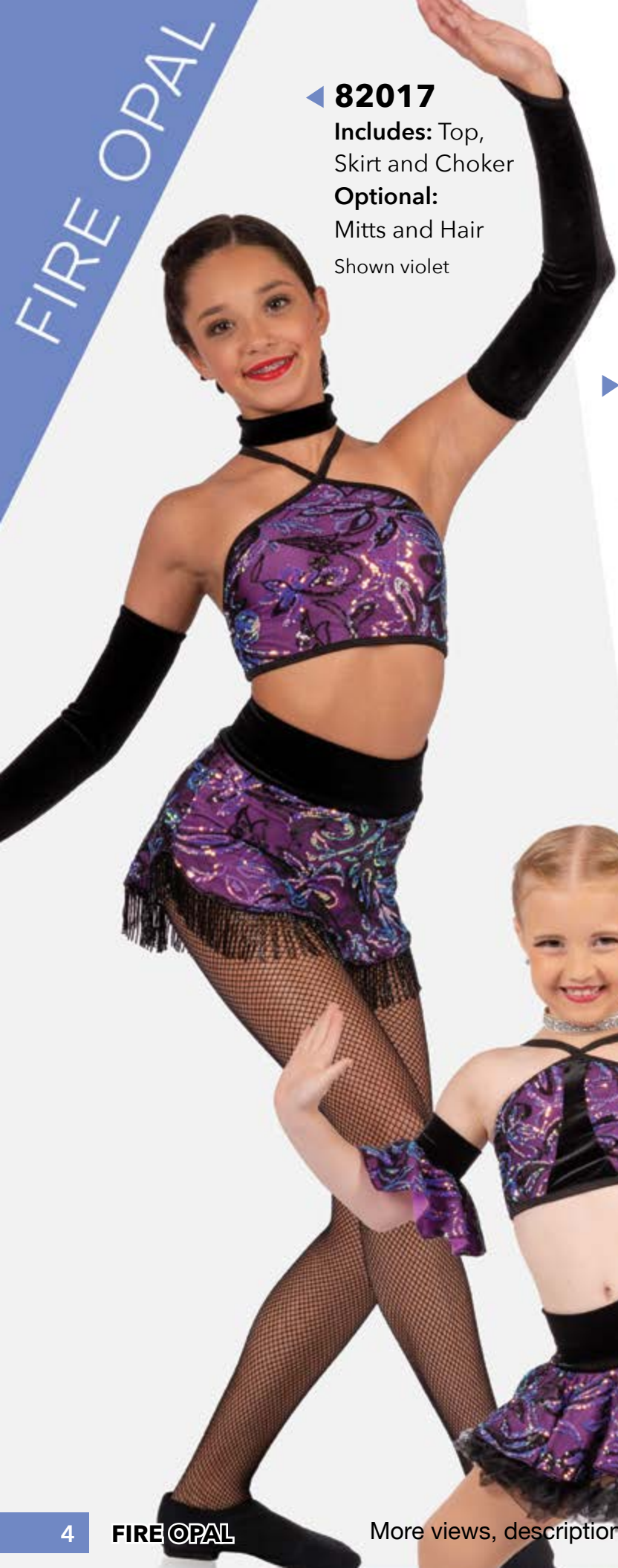
▲ **82020**
Includes: Dress
Optional: Mitts,
Hair and Applique
Shown periwinkle



▼ **82019**
Includes:
Top and Skirt
Optional: Hair
and Applique
Shown periwinkle

▶ **82023**
Includes:
Underwire Bra
(CL-AXL) and Skirt
Optional: Hair
and Applique
Shown periwinkle

▶ **82017**
Includes: Top,
 Skirt and Choker
Optional:
 Mitts and Hair
 Shown violet



▶ **82018**
Includes:
 Top and Brief
Optional: Mitts,
 Hair and Applique
 Shown violet



▼ **82021**
Includes:
 Top and Skirt
Optional:
 Mitts and Hair
 Shown violet



▶ **82011**
Includes: Unitard
 and Choker
Optional: Skirt
 and Jacket
 Shown white

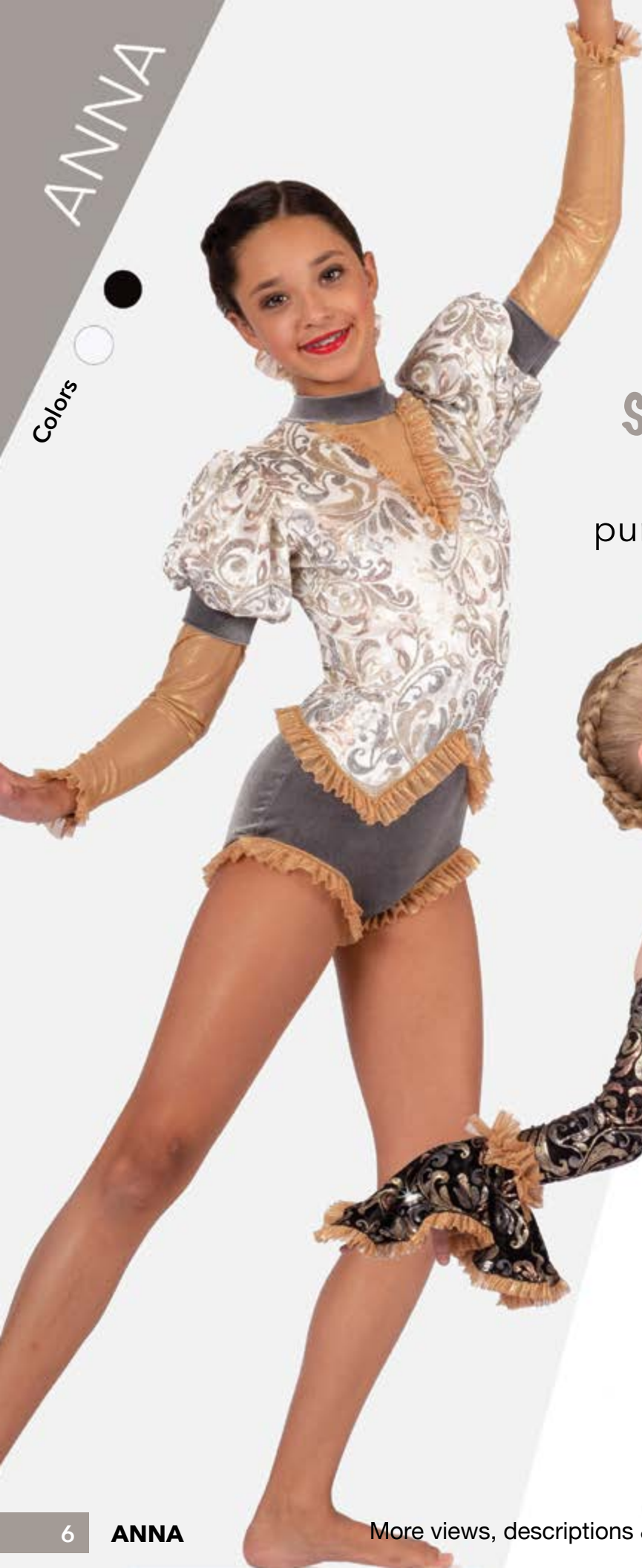


Skirt and
 Jacket
 optional



Invisible
 mesh





◀ **82013**
Includes: Leotard
Optional: Hair
Shown white

▼ **82014**
Includes: Dress
and Arm Bell
Shown black

See more
online!
pumpers.com



◀ **82016**
Includes:
Leotard and Band
Optional: Skirt, Mitts
and Applique
Shown black

▼ **82015**
Includes: Dress
Shown white



▶ **82012**
Includes:
Leotard with Tails
Optional:
Mitts and Hat
Shown black



▼ **81957**

Includes: Jacket,
Top, Brief with Tails
Optional: Hair
As Shown



81739

◀ **81955**

Includes: Dress
As Shown

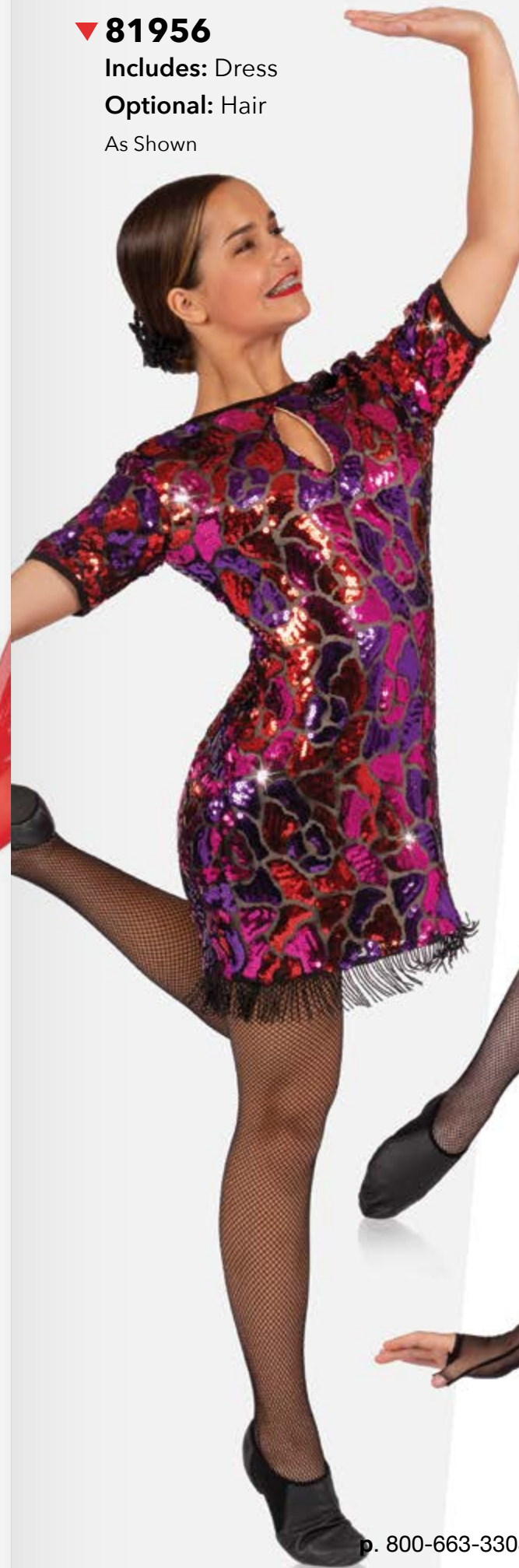
▼ **81954**

Includes: Leotard
As Shown



▼ **81956**

Includes: Dress
Optional: Hair
As Shown



81964

▲ **81964**

Includes: Leotard
Optional: Hat
Shown red



◀ **81953**

Includes: Top,
Skirt and Choker
Optional:
Mitts and Hat
As Shown



▼ **81902**

Includes: Dress
Optional: Mitts and Hair
 Shown baby blue



▼ **81904**

Includes: Leotard
Optional: Mitts and Hair
 As Shown



▼ **81900**

Includes: Top, Skirt
Optional: Hair
 Shown baby blue



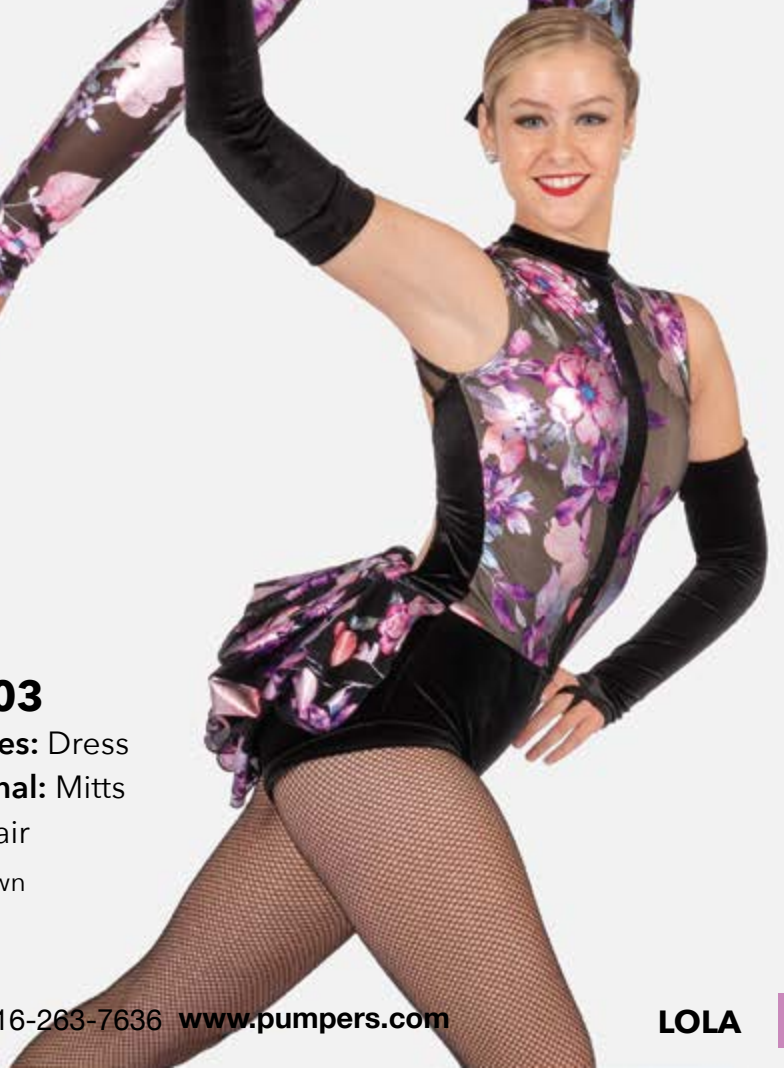
▶ **81906**

Includes: Unitard
Optional: Hair
 Shown black



▶ **81903**

Includes: Dress
Optional: Mitts and Hair
 As Shown



Colors



See more
 online!
pumpers.com



▼ **81927**

Includes: Dress

Shown fuchsia

Jade mesh skirts will be lighter than jade velvet color

▼ **81932**

Includes: Top and Skirt

Shown fuchsia

▼ **81930**

Includes: Top and Skirt

Shown jade

▼ **81928**

Includes: Leotard

Shown jade

▼ **81929**

Includes: Top and Skirt

Shown fuchsia

▶ **81931**

Includes: Leotard

Optional: Mitts

Shown jade

See more
online!
pumpers.com

See more
online!
pumpers.com



82057

◀ **82057**
Includes: Top and Skirt
Optional: Hair
and Appliques
As Shown

▼ **82060**
Includes: Top and Brief
Optional: Hair
and Appliques
As Shown



82060



82058

▶ **82059**
Includes: Dress
Optional: Mitts,
Hair and Appliques
As Shown

▼ **82058**
Includes: Dress
Optional: Hair
and Appliques
As Shown



82059



NEON

NEON

▶ **82036**
Includes: Leotard
Optional: Mitts
Shown neon yellow /
neon orange



See more
online!
pumpers.com

Lace & Fringe Colors
● ●
Tricot Colors
● ● ● ● ●

▶ **82034**
Includes: Leotard and Belt
Optional: Mitts
Shown neon yellow /turquoise



▼ **82032**
Includes: Dress,
Choker and Wrist
Shown neon yellow /
neon yellow



▼ **82037**
Includes:
Top and Skirt
Optional: Hair
As Shown



◀ **82035**
Includes: Top and Brief
Optional: Mitts
Shown hot pink /lime

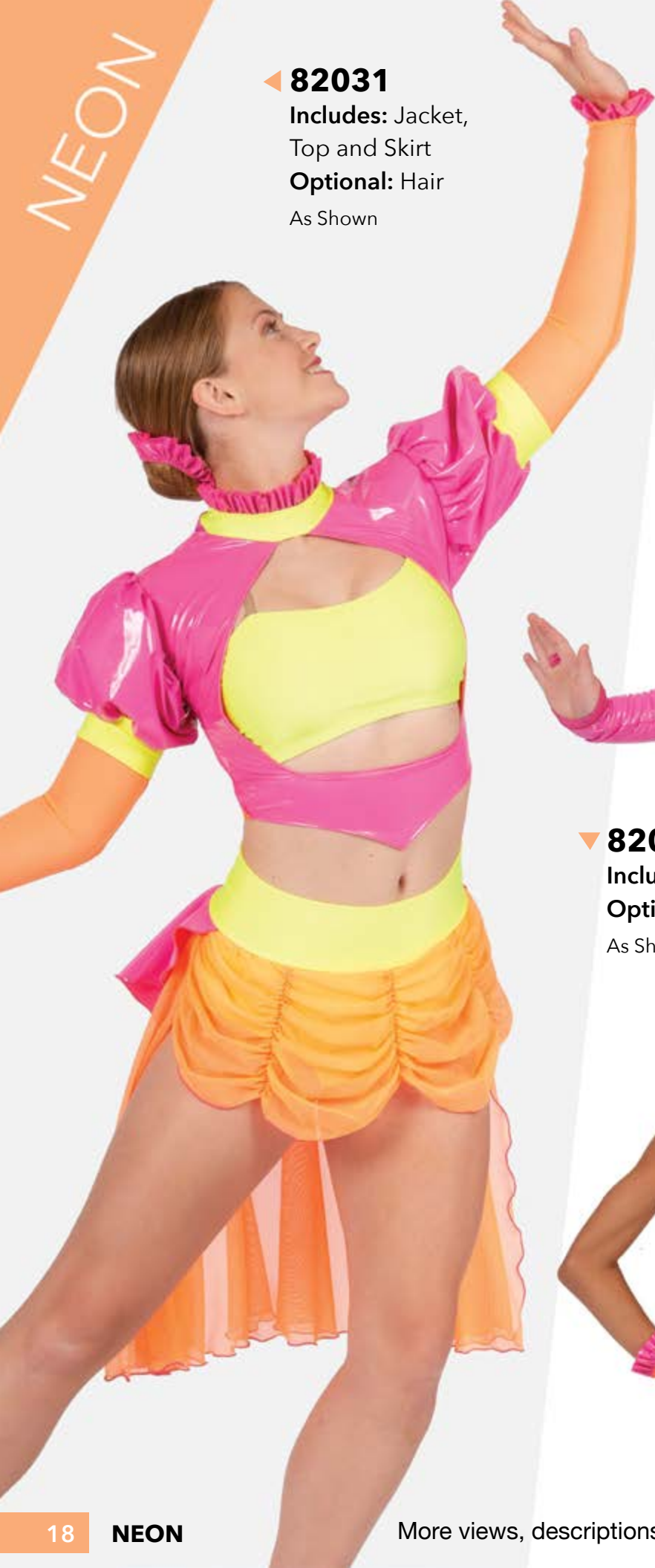


▶ **82033**
Includes: Dress
and Choker
Optional: Mitts
Shown hot pink /
neon yellow



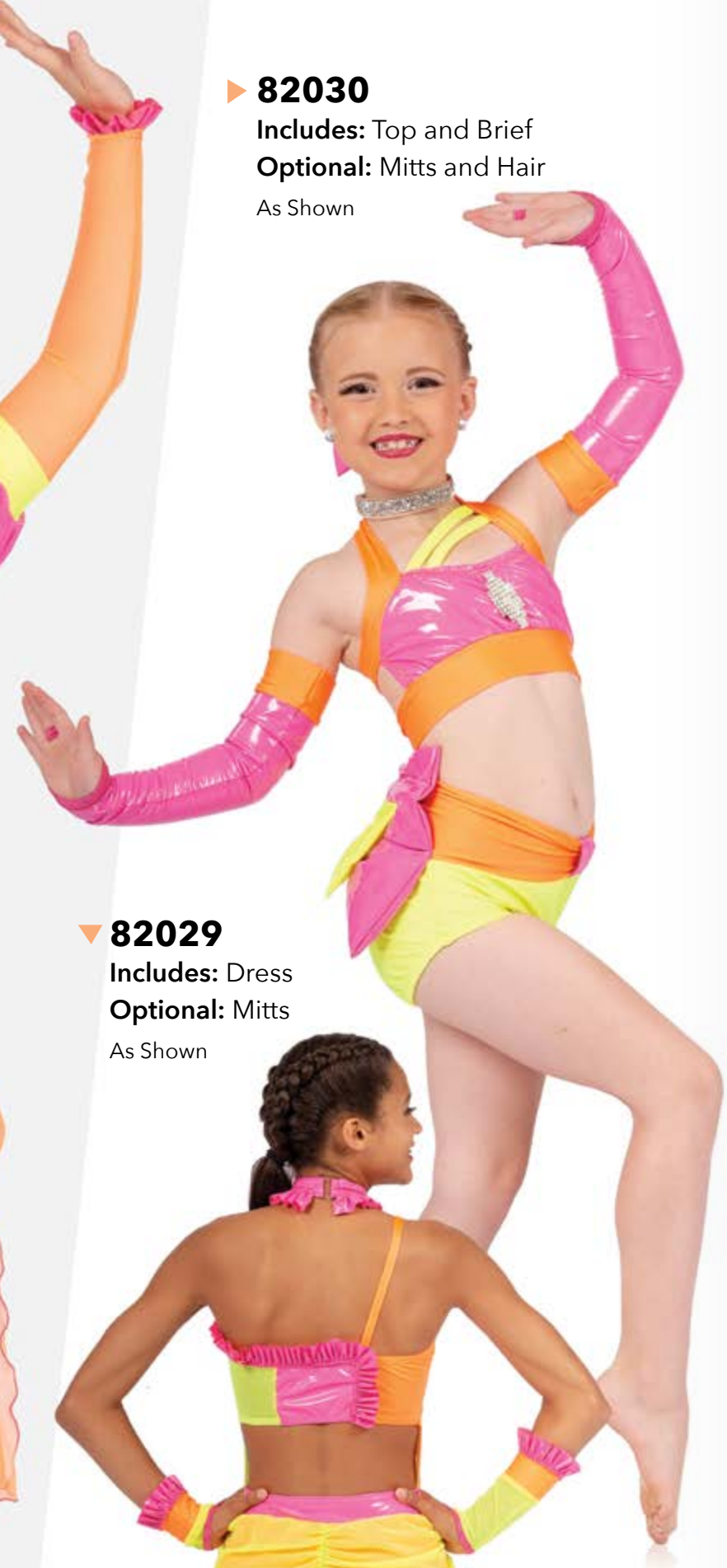
◀ **82031**

Includes: Jacket, Top and Skirt
Optional: Hair
As Shown



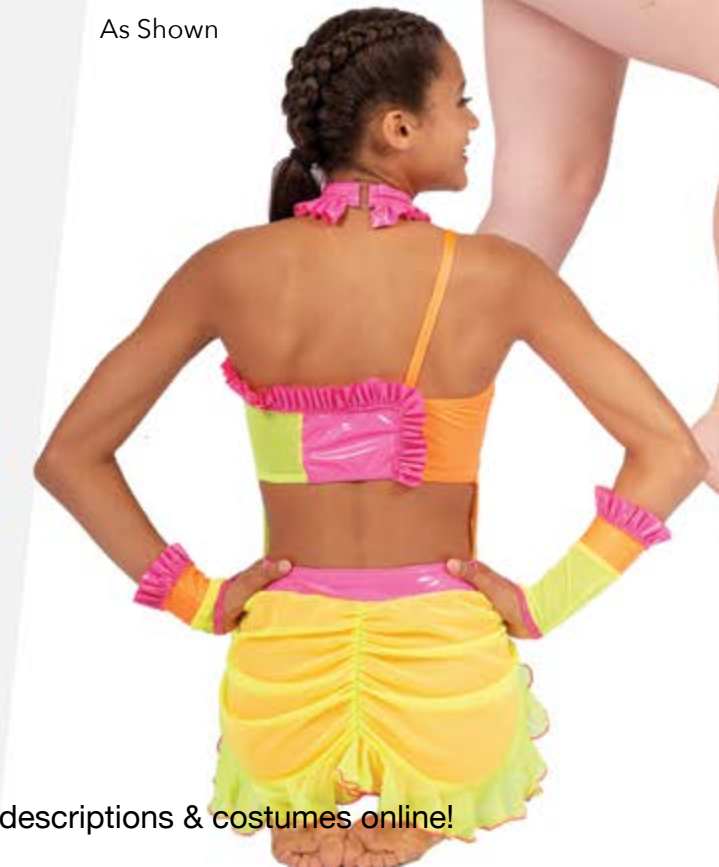
▶ **82030**

Includes: Top and Brief
Optional: Mitts and Hair
As Shown



▼ **82029**

Includes: Dress
Optional: Mitts
As Shown



◀ **81880**

Includes: Dress
Optional: Mitts and Hair
As Shown



▼ **81881**

Includes: Top and Skirt
Optional: Mitts and Hair
As Shown



◀ **81886**
Includes: Top and Skirt
Optional: Hair
and Appliques
As Shown



81886

▶ **81887**
Includes: Top and Skirt
Optional: Hair
Shown crushed



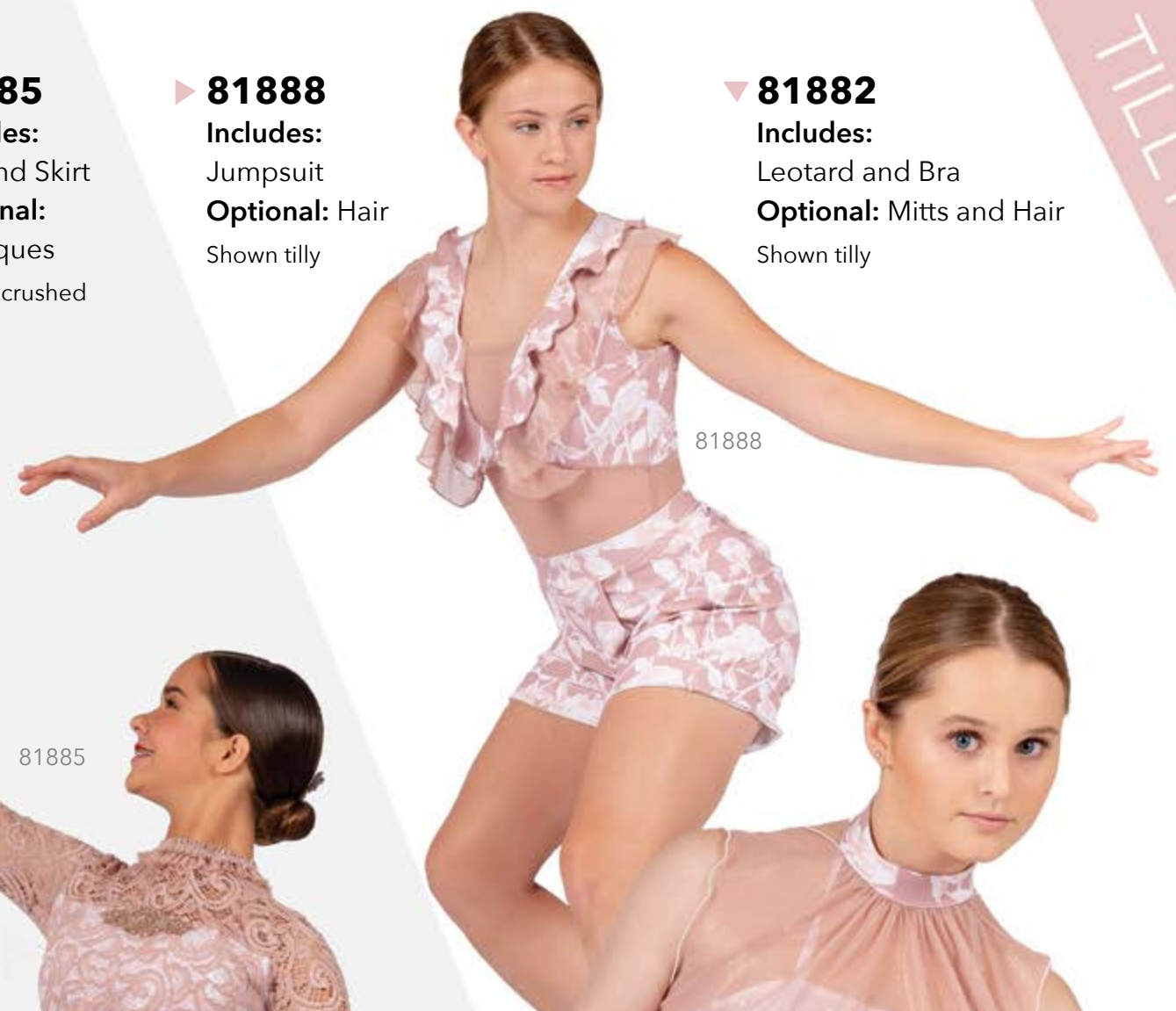
81887

▼ **81885**
Includes:
Top and Skirt
Optional:
Appliques
Shown crushed



81885

▶ **81888**
Includes:
Jumpsuit
Optional: Hair
Shown tilly



81888

▼ **81882**
Includes:
Leotard and Bra
Optional: Mitts and Hair
Shown tilly



81882

See more
online!
pumpers.com



▲ **82006**
Includes: Top and Skirt
Optional: Hair
As Shown

▼ **82009**
Includes: Leotard
Optional: Hair
As Shown

◀ **82007**
Includes: Top and Brief
Optional: Hair
As Shown

▼ **82008**
Includes: Leotard
Optional: Mitts and Hair
As Shown

▶ **82005**
Includes: Dress
Optional: Mitts and Hair
As Shown

◀ **82010**
Includes: Top and Skirt
Optional: Mitts and Hair
As Shown

See more
online!
pumpers.com



81894

- ▶ **81891**
Includes: Top and Skirt
Optional: Appliques
Shown dusty rose
- ◀ **81894**
Includes: Leotard
Optional: Mitts and Appliques
Shown topaz
- ▼ **81893**
Includes: Dress
Optional: Appliques
Shown dusty rose

81893

See more online!
pumpers.com



81891

- ▶ **81892**
Includes: Top and Skirt
Optional: Hair, Appliques and Mitts
Shown topaz





ICICLES

ICICLES

Colors



NEW!
Underwire Bra

81914

81908

81910

81913

◀ **81914**
Includes: Underwire Bra (CL-AXL), Choker and kirt
Optional: Mitts and Hair
Shown gold

▶ **81913**
Includes: Dress
Optional: Hair
Shown gold

◀ **81910**
Includes: Top and Skirt
Optional: Hair
Shown silver

▼ **81912**
Includes: Leotard
Optional: Mitts and Hair
Shown silver

◀ **81908**
Includes: Dress
Optional: Hair
Shown red

81912

See more
online!
pumpers.com



SHATTERED

SHATTERED

Colors



▼ **81962**

Includes: Leotard
Optional:
Mitts and Hat
Shown kelly

▼ **81965**

Includes:
Top and Brief
Optional: Mitts
Shown royal

▼ **81963**

Includes: Dress
Optional: Mitts and Hair
Shown gold

See more
online!

pumpers.com

▼ **82078**

Includes: Unitard
Optional: Hat
Shown red



82077



◀ **82077**

Includes:
Top and Brief OR
Legging
Optional: Hat
Shown black

▼ **82079**

Includes: Biketard
Optional: Hat
Shown kelly



▶ **82076**

Includes: Leotard,
Top and Choker
Optional: Hat
Shown royal



Colors



▼ **82047**
Includes: Leotard and Arms
Optional: Hair
Shown purple



◀ **82046**
Includes: Dress
Optional: Hair
Shown slate



▼ **82048**
Includes: Leotard
Shown slate



◀ **82045**
Includes: Unitard
Shown purple



See more online!
pumpers.com

▼ **82050**
Includes: Unitard
Optional: Mitts and Hair
Shown slate



◀ **82063**

Includes: Unitard
Shown white

Invisible
mesh chest

Lyrical Colors

 White	 Lt Grey	 Dk Grey	 Black
 Brown	 Sable	 Copper	 Nude
 Ivory	 Lemon	 Peach	 Coral
 Melon	 Dusty Rose	 Baby Pink	 Blush
 Carnation	 Fuchsia	 Red	 Burgundy
	 Merlot	 Lilac	 Purple
	 Violet	 Plum	 Baby Blue
	 Aqua	 Arabian	 Turquoise
	 Periwinkle	 Mallard	 Navy
		 Royal	 Neon Yellow
		 Mint	 Celery
		 Moss	 Olive
		 Jade	 Forest

GREAT low
criss-cross back

81990

◀ **81990**

Includes: Dress
Shown baby pink

▶ **81991**

Includes: Top,
Skirt
Shown baby blue

▼ **81987**

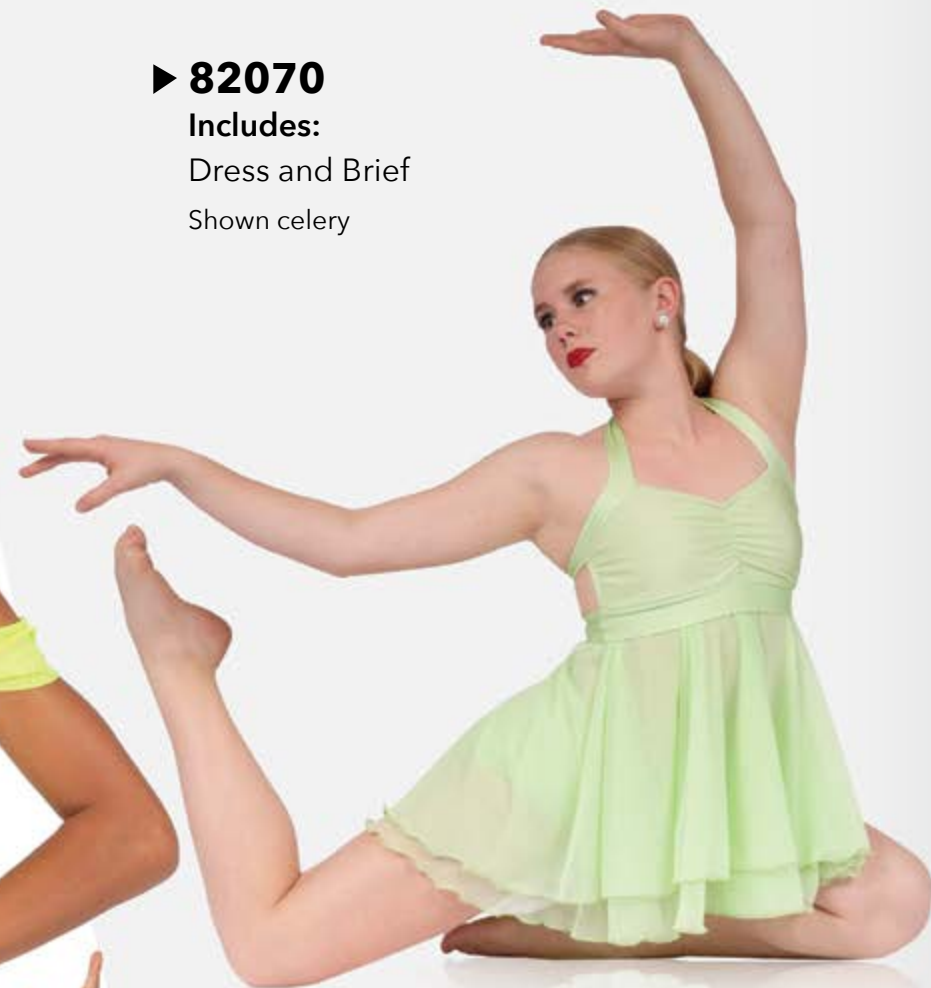
Includes: Dress
Shown lemon

81987

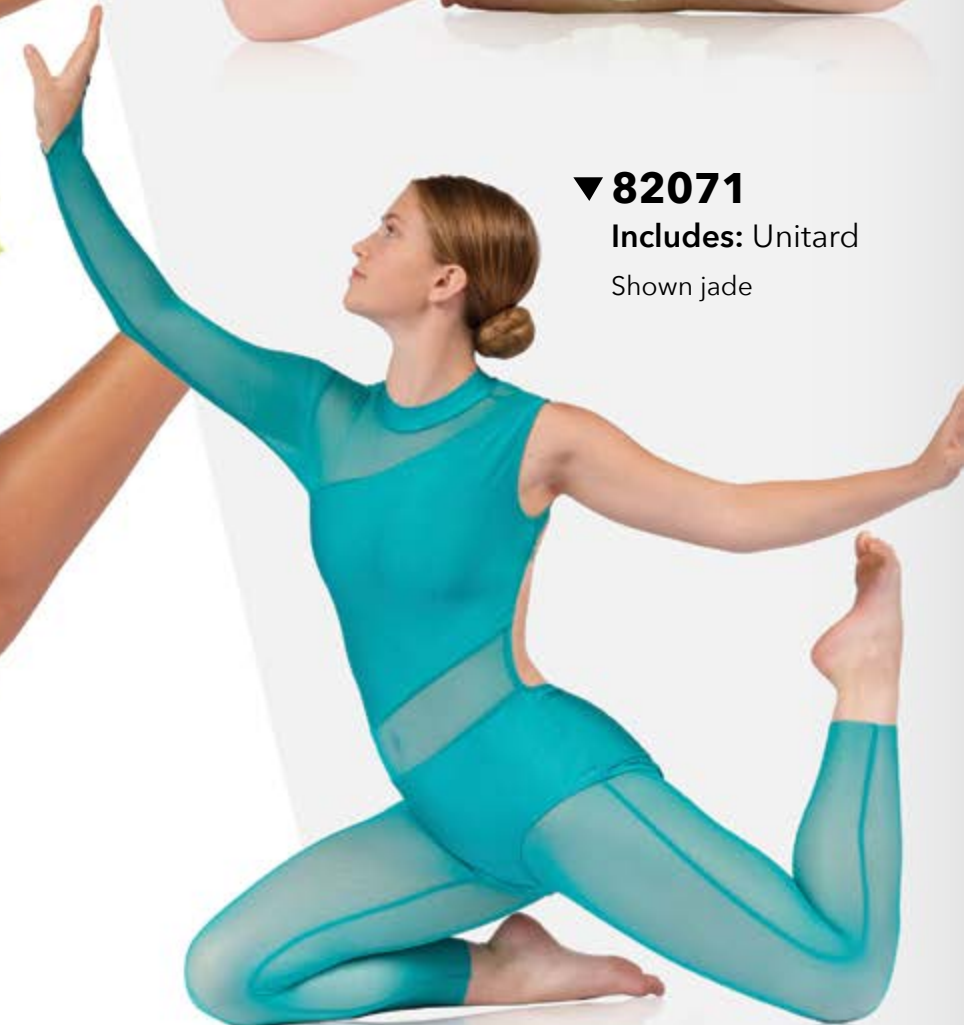
81991



▲ **82075**
Includes:
Top and Skirt
Shown neon yellow



▶ **82070**
Includes:
Dress and Brief
Shown celery



▼ **82071**
Includes: Unitard
Shown jade

Colors on pg. 34



◀ **82074**
Includes: Underwire
Bra (CL - AXL) and Skirt
Shown mint

▶ **81995**
Includes: Padded
Bra (no wire) and Skirt
Shown baby blue



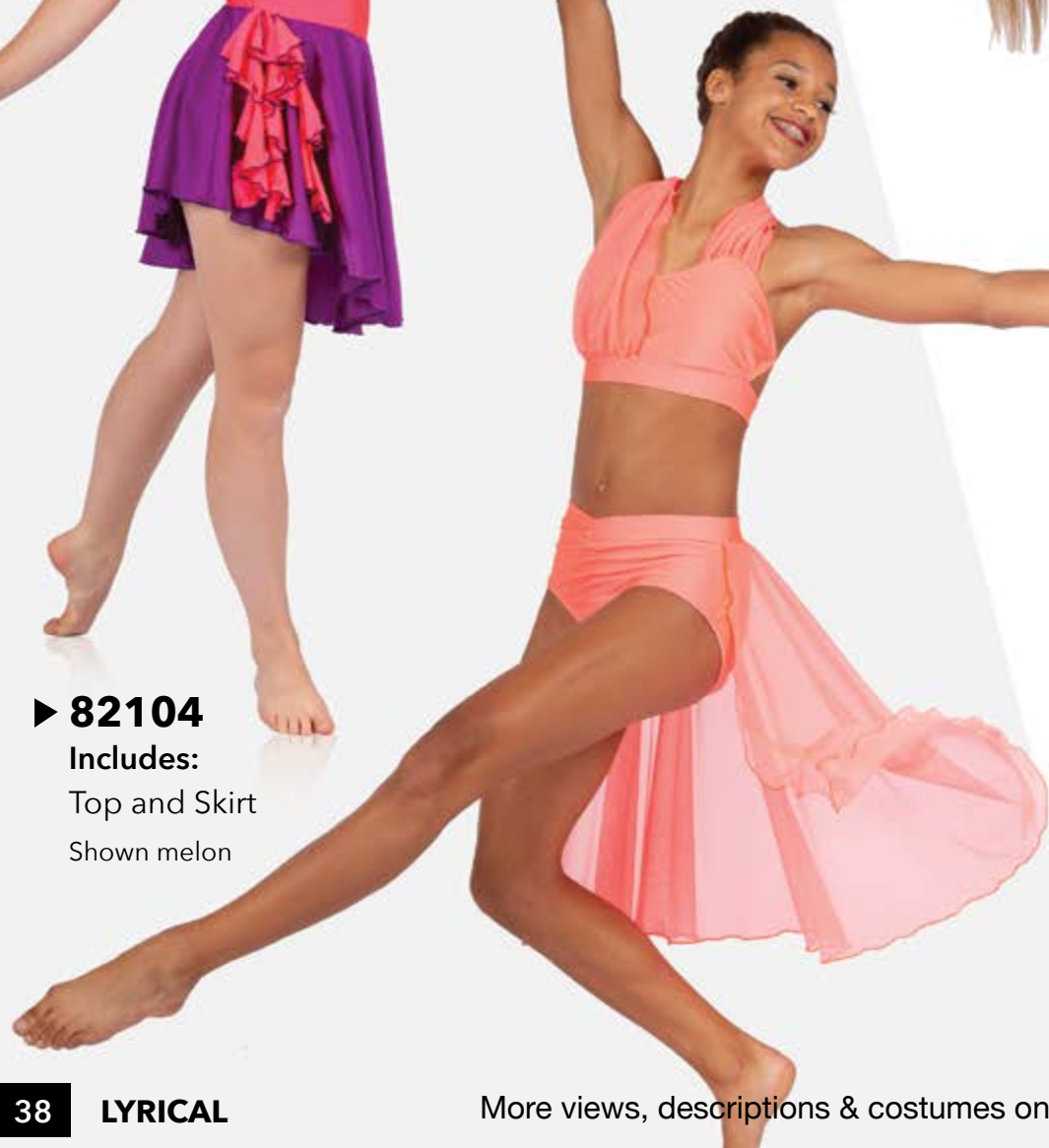
▼ **82000**

Includes: Dress
Shown coral / plum



► **82104**

Includes:
Top and Skirt
Shown melon



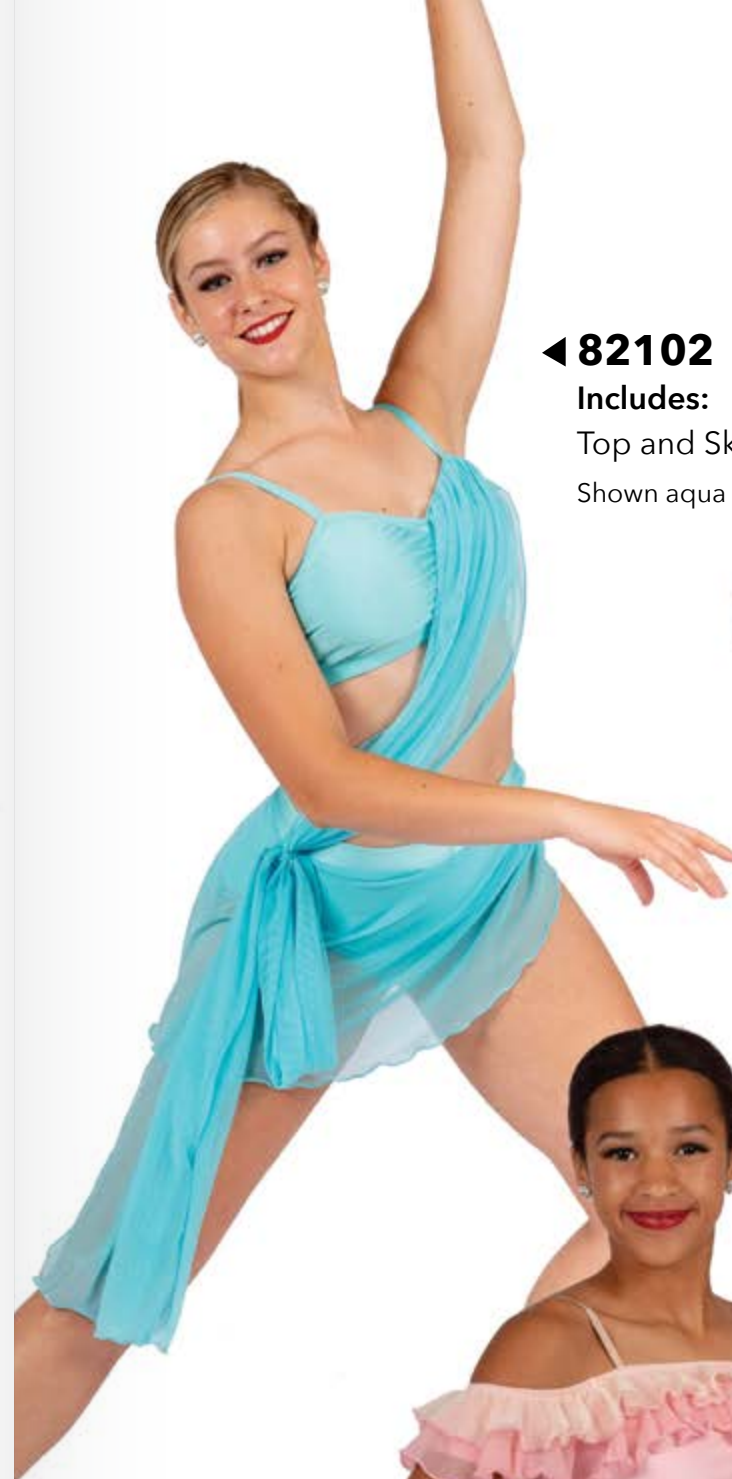
▼ **82061**

Includes: Dress
Shown fuchsia



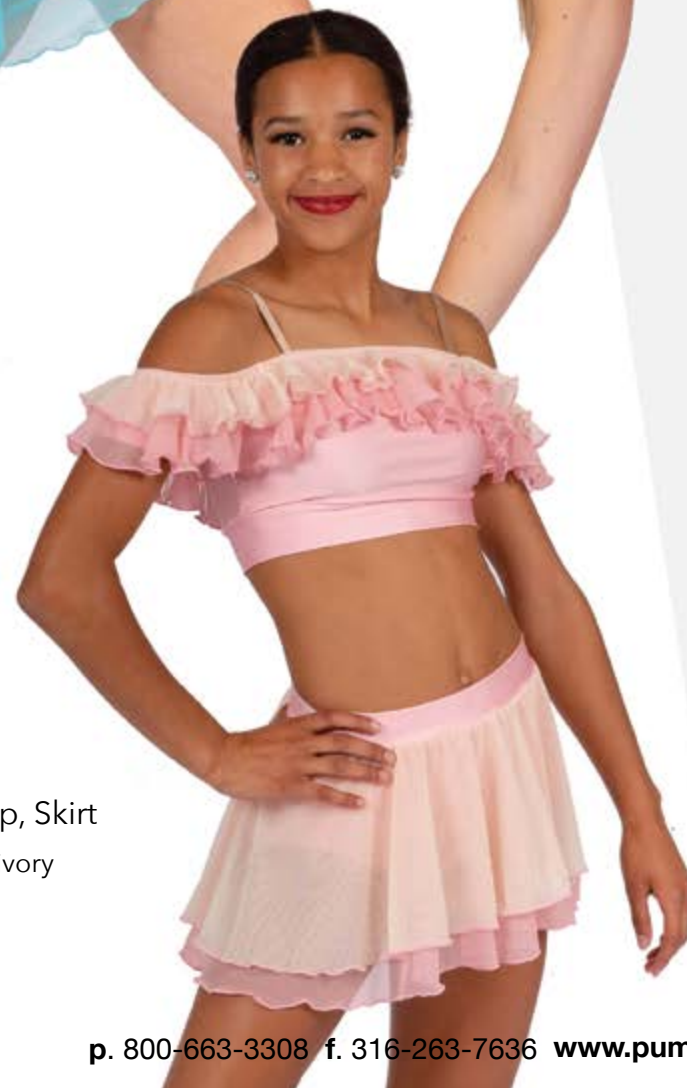
◀ **82102**

Includes:
Top and Skirt
Shown aqua



► **82069**

Includes: Top, Skirt
Shown blush / ivory



See more online!

pumpers.com

COLORS ON PG. 34

► **82103**

Includes: Leotard
Shown violet





Colors on pg. 34

▼ **82064**

Includes: Unitard with attached brief, Cami Top and Brief
Shown nude

▼ **82068**

Includes: Dress
Shown dusty rose tricot / silver mesh



More views, descriptions & costumes online!

▼ **82065**

Includes: Top and Boy Short
Shown peach

► **81994**

Includes: Dress
Shown red tricot / red mesh

► **81996**

Includes: Boytard
Optional: Leggings
Shown copper /brown

81996
Optional Leggings



Invisible mesh

▲ **82003**
Includes:
Top and Skirt
Optional:
Appliques and Hair
Shown carnation



82066

▲ **82066**
Includes: Leotard
Shown aqua



Invisible mesh

82072

◀ **82072**
Includes: Leotard
Shown navy



Invisible mesh chest

▲ **82002**
Includes:
Top and Skirt
Shown periwinkle



81988

▼ **81988**
Includes:
Top and Skirt
Shown olive



▶ **82073**
Includes:
Top and Brief
Shown olive



Limited taffeta skirt colors

◀ **82100**
Includes: Underwire Bra (CL-AXL) and Skirt
Optional: Mitts
Shown black / black

▼ **81999**
Includes:
Top and Brief
Shown merlot

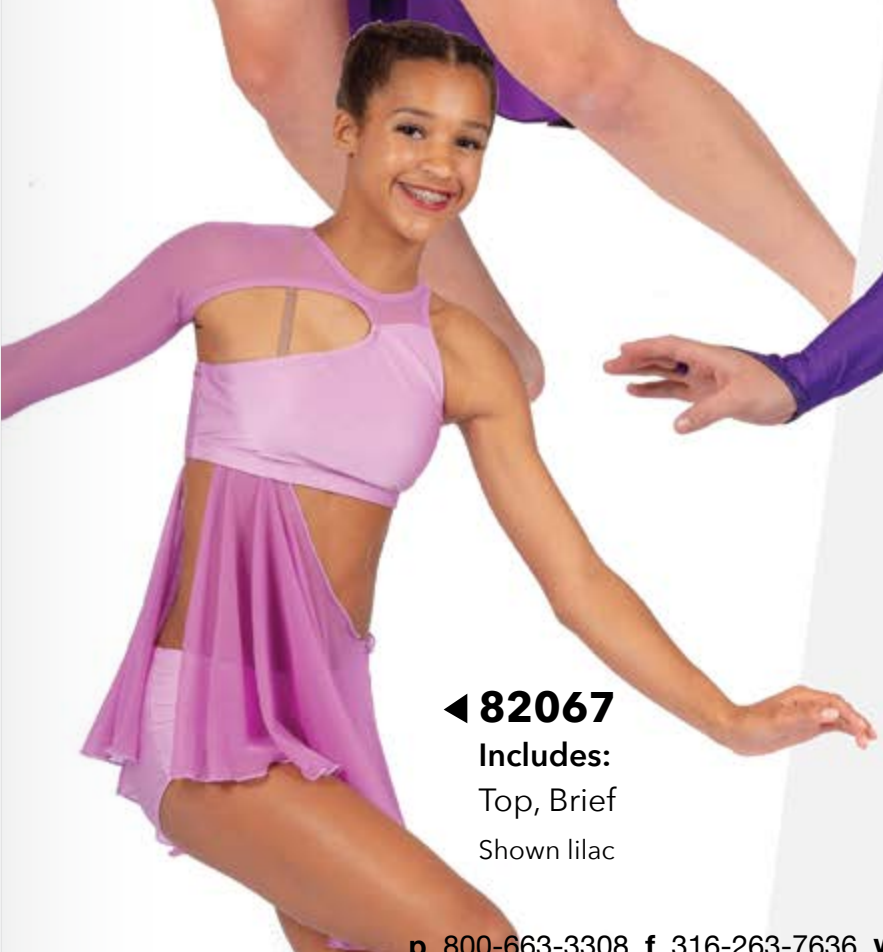


◀ **82001**
Includes:
Top, Skirt and Choker
Shown plum / black

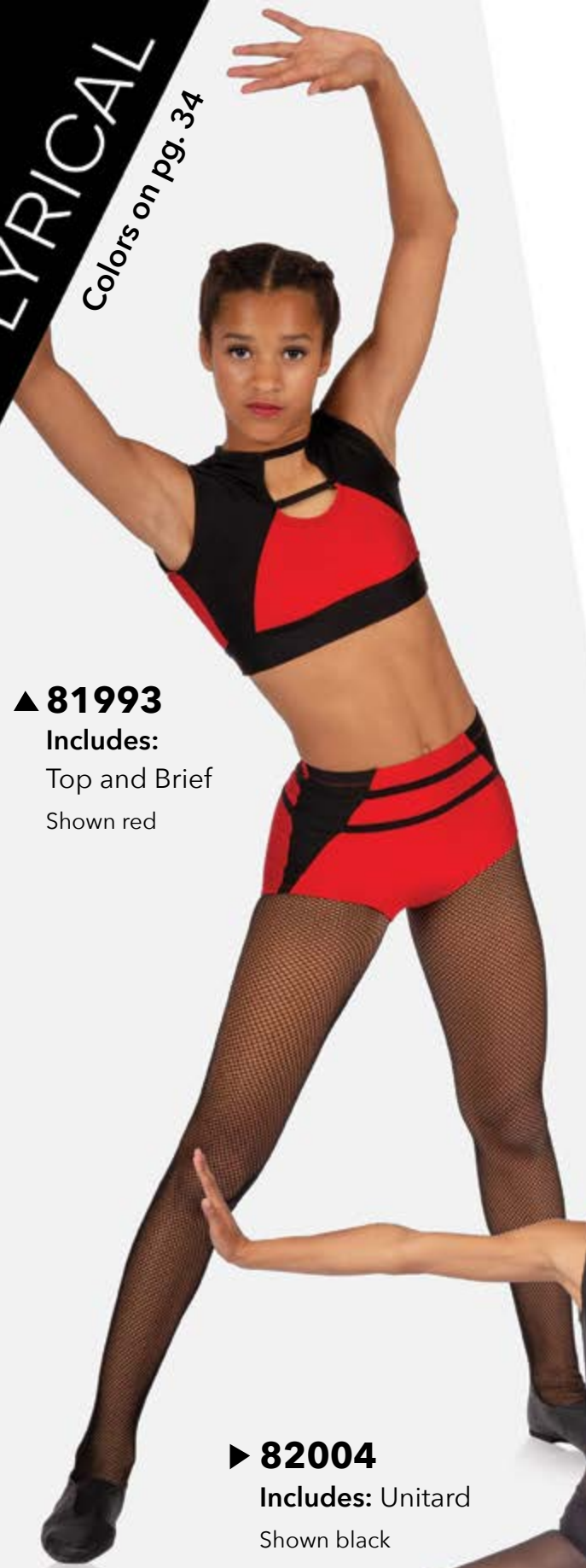
▼ **82051**
Includes: Dress
Optional: Mitts, Rhinestone Trim and Liner
Shown purple



◀ **82067**
Includes:
Top, Brief
Shown lilac



▲ **81993**
Includes:
Top and Brief
Shown red



▶ **82004**
Includes: Unitard
Shown black



▼ **81992**
Includes: Dress
Shown dark grey



81989

◀ **81989**
Includes: Unitard
Shown burgundy



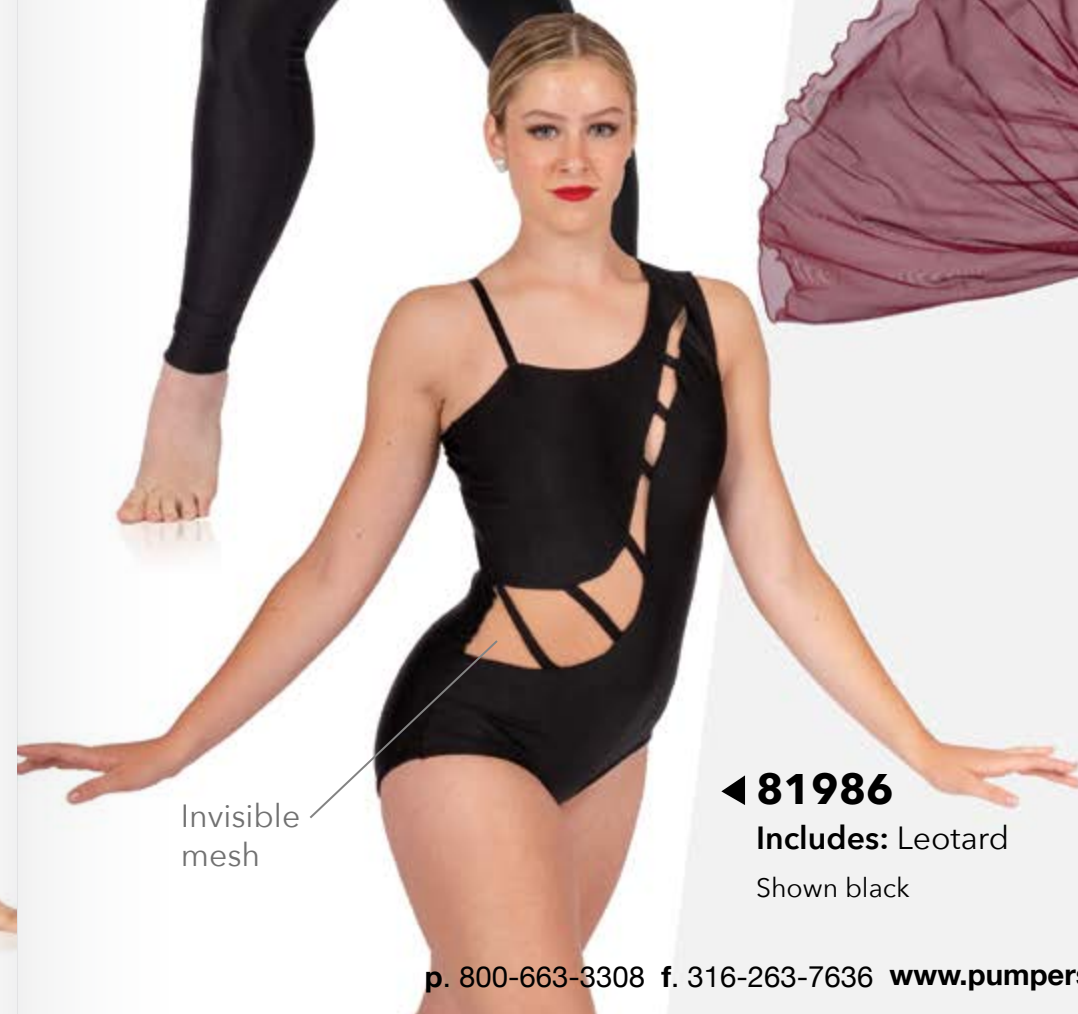
▼ **81985**
Includes: Top and Skirt
Shown burgundy



81985

Invisible mesh

◀ **81986**
Includes: Leotard
Shown black





◀ **81984**
Includes: Top,
Skirt and Choker
Optional: Mitts
Shown moss / burgundy

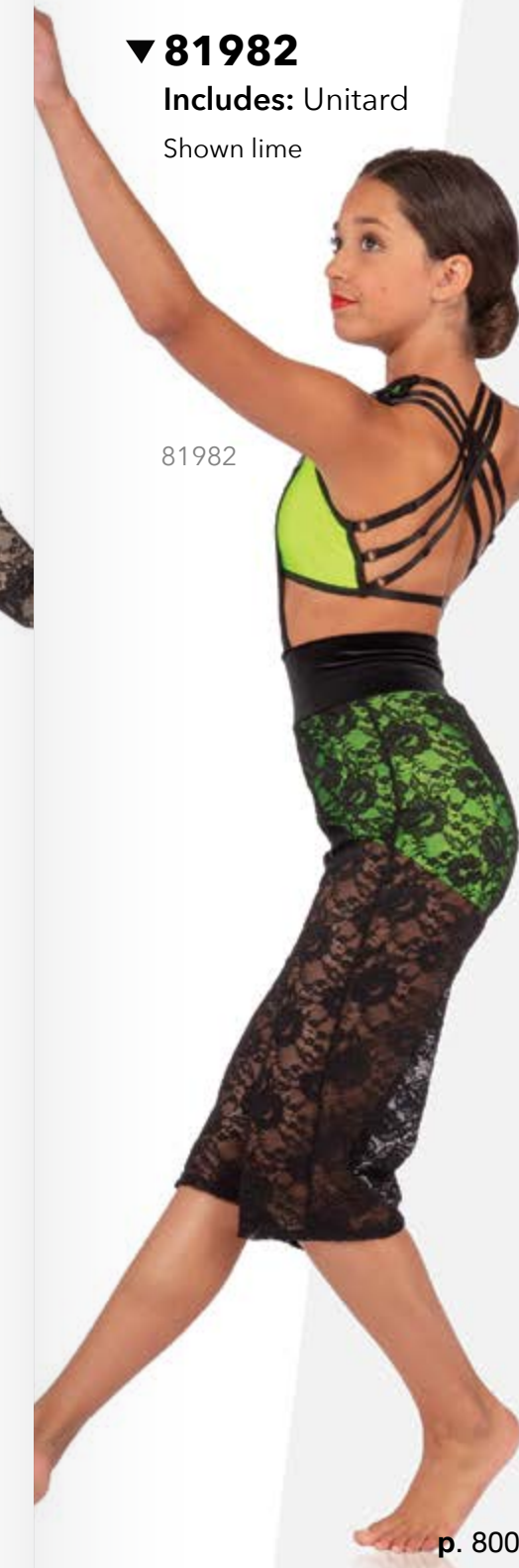
▼ **81983**
Includes:
Top and Brief
Optional: Mitts
and Hat
Shown nude



▶ **81980**
Includes: Top
and Pants
Shown turquoise

▶ **81981**
Includes: Top
and Unitard
Shown hot pink

▼ **81982**
Includes: Unitard
Shown lime



81980

81981

81982

Velvet Colors	 Burgundy	 Red	 Copper	 Fuchsia	 Black
	 Navy	 Royal	 Forest	 Mallard	 Silver
Mesh Colors	 Burgundy	 Red	 Copper	 Navy	 Royal
	 Black	 Silver			

◀ **81975**
Includes: Unitard
Optional: Hood
Shown copper / burgundy

Invisible mesh chest

▼ **81976**
Includes: Leotard
Optional: Mitts
Shown red / red

▶ **81979**
Includes: Dress
Shown black / black

◀ **81971**
Includes: Unitard
Shown royal / royal



◀ **81977**
Includes: Top
and Leggings
Shown mallard / navy

▼ **81973**
Includes: Unitard
Optional: Appliques
Shown navy / copper



◀ **81974**
Includes: Leotard
Optional:
Mitts and Hair
Shown forest / black

▼ **81972**
Includes: Leotard
and Armband
Optional:
Flowers and Hair
Shown burgundy

Invisible
mesh

81951



▲ **81951**
Includes: Leotard and Choker
Optional: Rhinestone Trim, Mitts and Hair
Shown turquoise

▼ **81948**
Includes: Leotard
Optional: Hair
Shown hot pink

81948

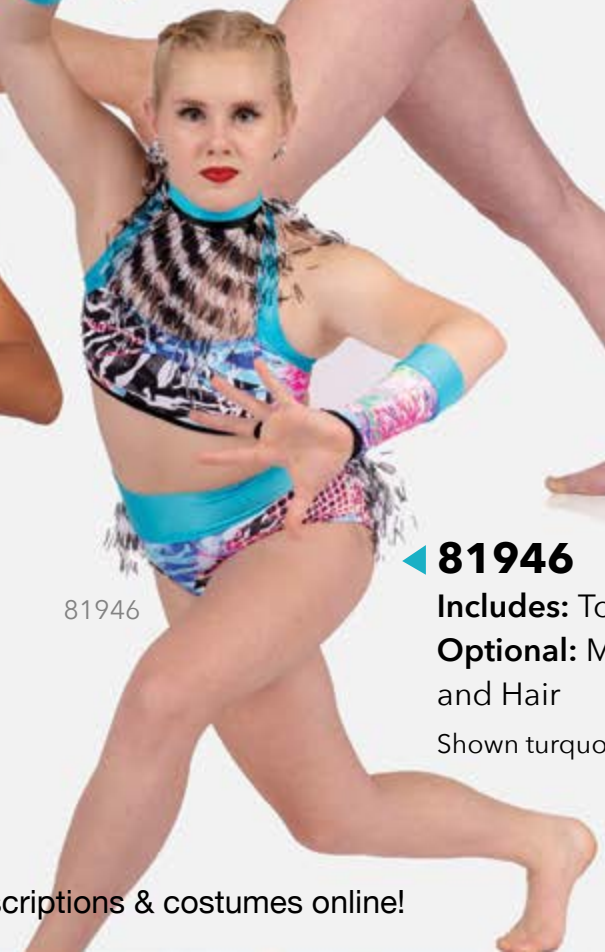


81949



▼ **81949**
Includes: Top, Brief
Optional: Mitts and Hair
Shown turquoise

81946

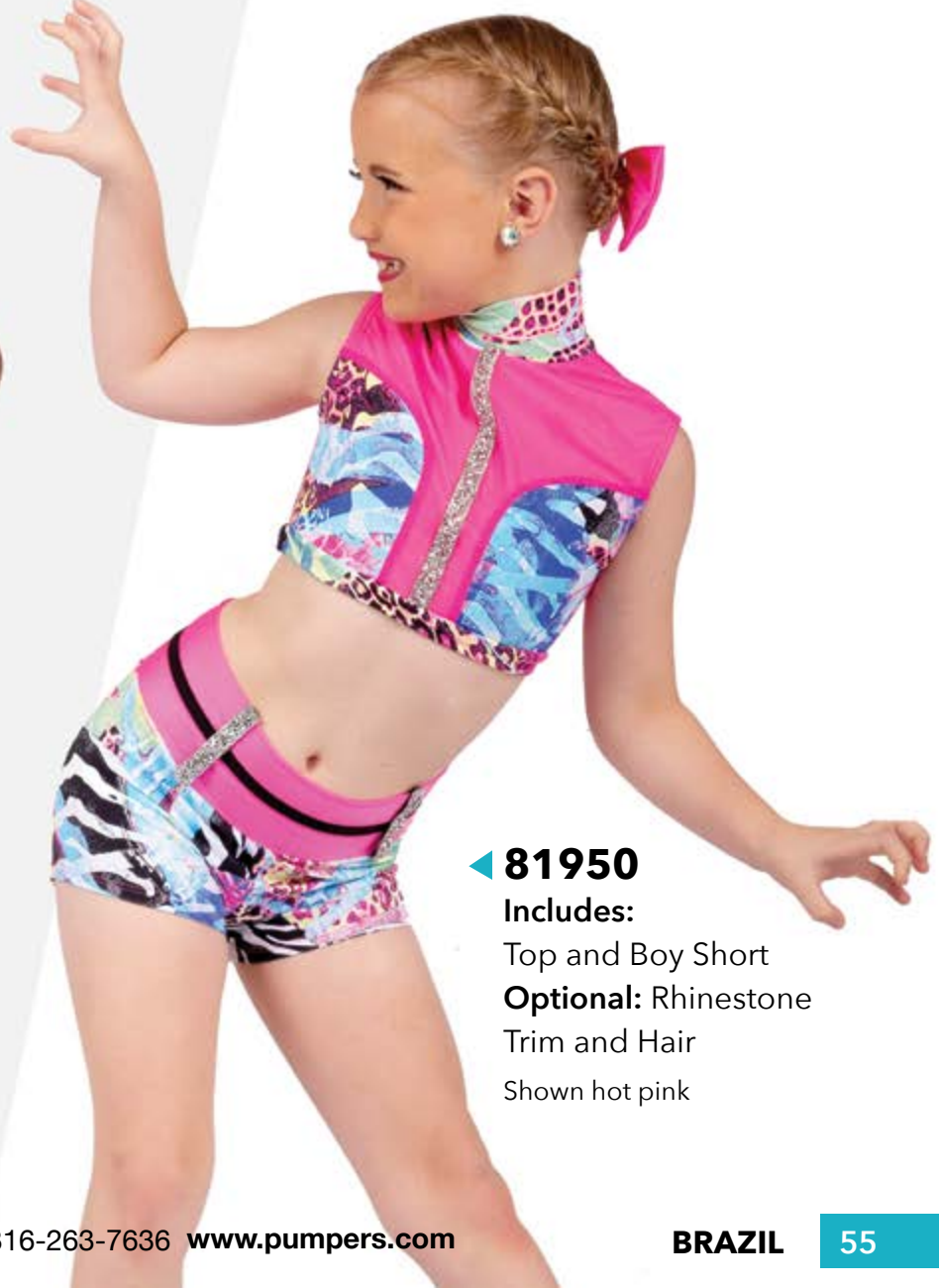


◀ **81946**
Includes: Top and Brief
Optional: Mitts and Hair
Shown turquoise

▼ **81947**
Includes: Top and Brief
Optional: Mitts and Hair
Shown hot pink



◀ **81950**
Includes: Top and Boy Short
Optional: Rhinestone Trim and Hair
Shown hot pink



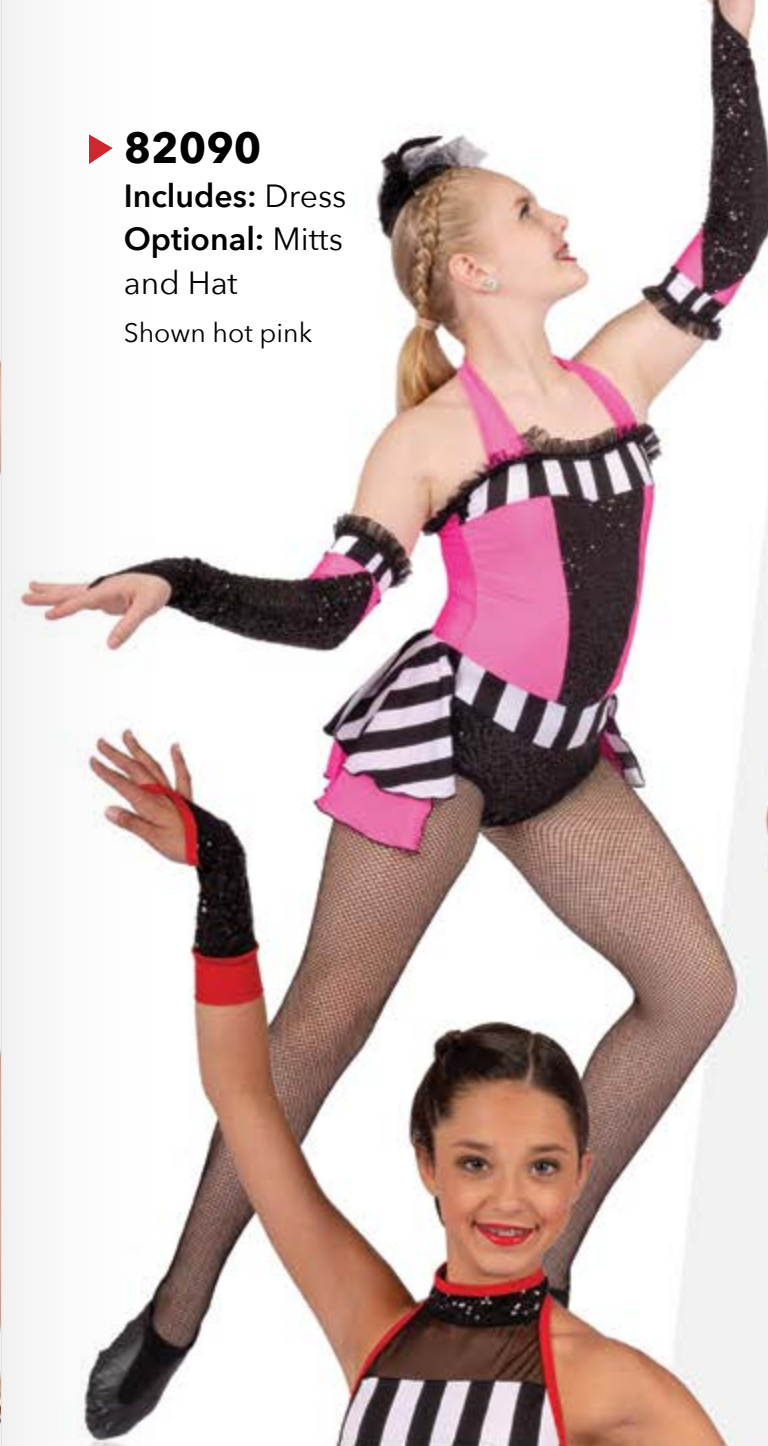
▶ **81923**
Includes: Boytard
Optional: Ankles
As Shown

▶ **81924**
Includes: Top
and Brief
Optional: Mitts,
Hair and Ankles
As Shown

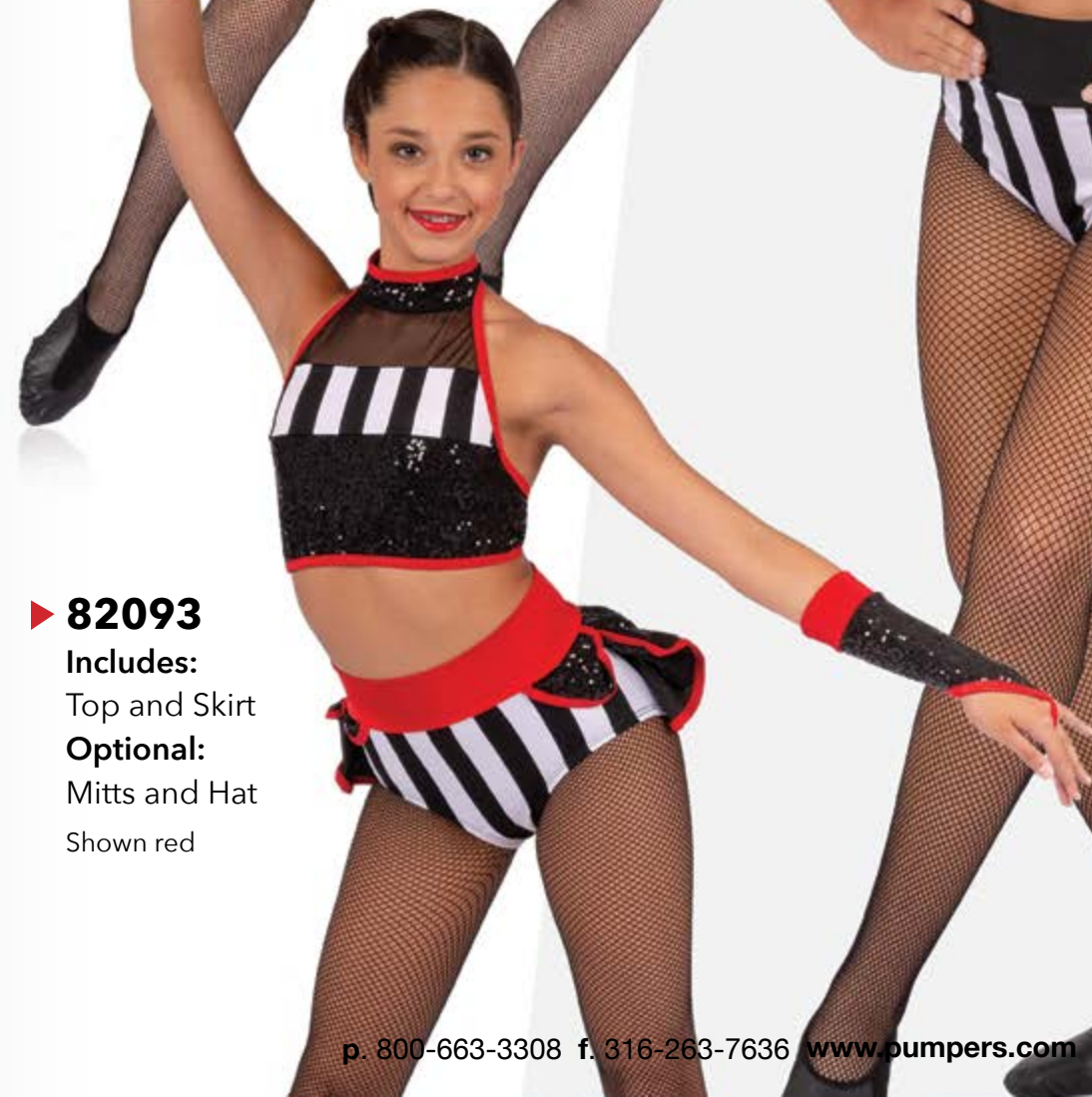


▶ **81922**
Includes: Top
and Boy Short
Optional: Hair
and Ankles
As Shown

▶ **82090**
Includes: Dress
Optional: Mitts
and Hat
Shown hot pink



▶ **82093**
Includes:
Top and Skirt
Optional:
Mitts and Hat
Shown red

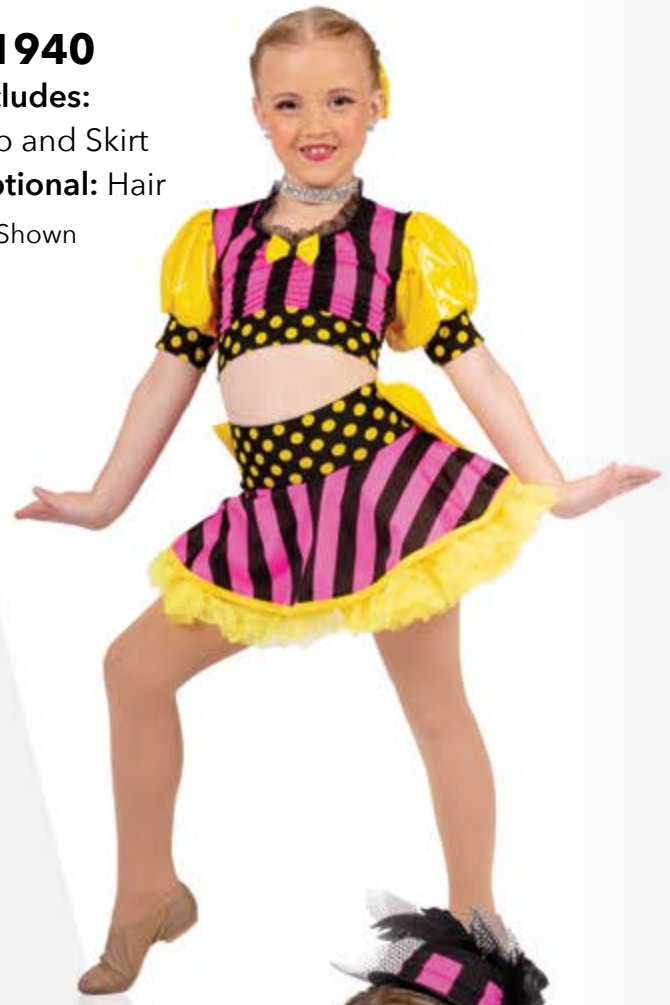


▶ **82091**
Includes: Shrug,
Top and Brief
Optional: Hat
Shown black





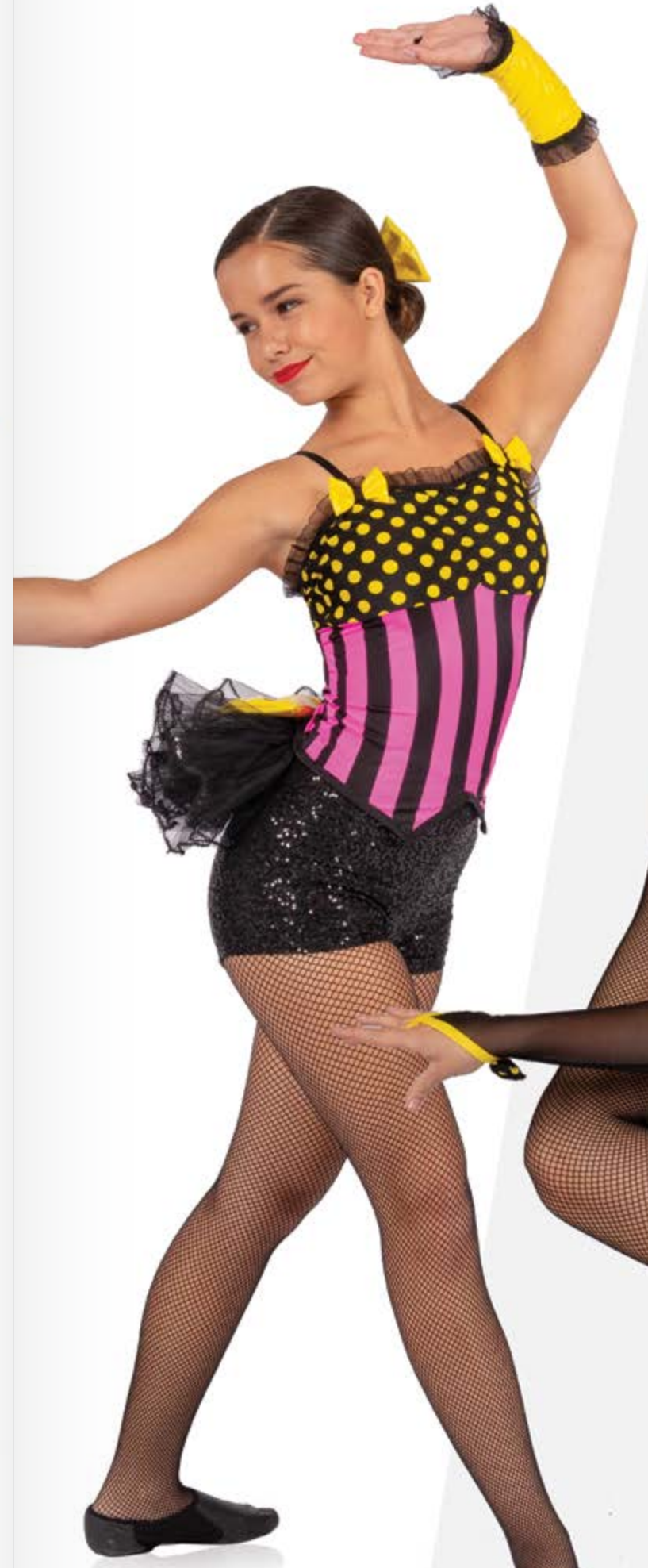
◀ **81942**
Includes: Top and Brief
Optional: Mitts and Hair
As Shown



▶ **81940**
Includes: Top and Skirt
Optional: Hair
As Shown



▼ **81939**
Includes: Top and Skirt
Optional: Mitts and Hat
As Shown



◀ **81941**
Includes: Top and Boy Short
Optional: Mitts and Hair
As Shown



▼ **81943**
Includes: Leotard
Optional: Mitts and Hair
As Shown



DOTS

DOTS

▶ **81917**
Includes: Top and Skirt
Optional: Mitts and Hair
Shown turquoise

▼ **81919**
Includes: Leotard
Optional: Mitts and Hair
Shown hot pink

▶ **81918**
Includes: Top, Brief and Choker
Optional: Mitts and Hair
Shown purple

▼ **81916**
Includes: Top and Skirt
Optional: Mitts and Hair
Shown yellow





▼ **82025**
Includes: Leotard and Choker
Optional: Mitts and Hair
 Shown hot pink

◀ **82027**
Includes: Top and Skirt
Optional: Mitts and Hair
 Shown hot pink

◀ **82024**
Includes: Top, Skirt
 and Choker
Optional: Mitts and Hair
 Shown red

▶ **82028**
Includes:
 Dress and Mitt
Optional: Hair
 Shown red



82054

◀ **82054**
Includes: Underwire Bra (CL-AXL), Skirt and Choker
Optional: Mitts and Hair
As Shown

▶ **82052**
Includes: Top, Skirt and Choker
Optional: Mitts and Hair
As Shown



82055

▶ **82055**
Includes: Top, Brief and Choker
Optional: Mitts and Hair
As Shown

▶ **82053**
Includes: Top and Brief
Optional: Hair
As Shown

82053

82052



82082



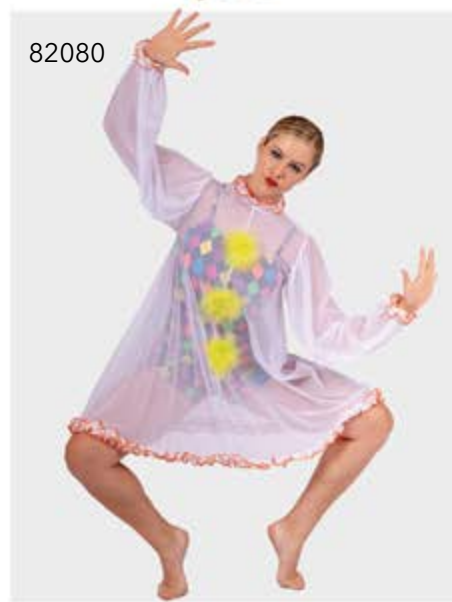
82081



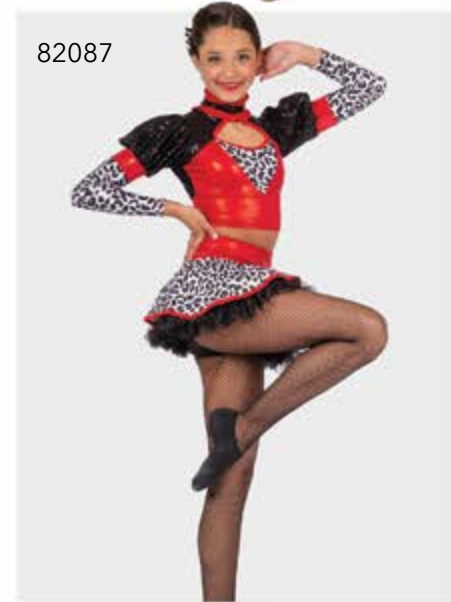
82084



82088



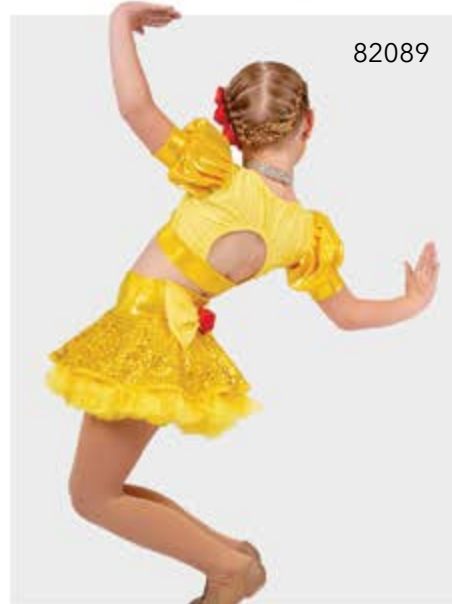
82080



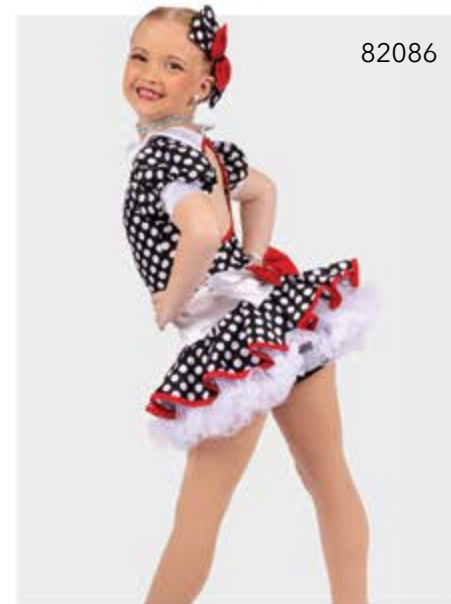
82087



82083



82089



82086

HOW TO ORDER

- ♥ **ONLINE**
www.pumpers.com
(by SKU number)
- ♥ **FAX**
(316) 263 7636
- ♥ **MAIL**
Pumpers, Inc.
1060 N. West St.
Wichita, KS 67203

SIZING

Child XS - Adult XL

Costumes are offered from child XS to adult XL. If you have a hard to fit person, we will alter to special sizing. Additional costs will apply.

SOLOS TO GROUPS

You can order any quantity you want!

DELIVERY DATE

Pumpers costumes are made to order. You will be given a ship date when the order is placed. If you are in a rush, let us know and we will do our best to accommodate your needs! Our current ship dates are always online. We take your ship date seriously and DO NOT miss them!

ORDER CHANGES / CANCELLATIONS

There is a small fee for order adjustments or cancellations of your order, as long as your order has not been started. If the order has been started, there will be a larger fee for change or cancellation. This fee depends on how far along we are on your order.

EXCHANGES

We have no costumes to exchange with because we make every costume to

order. In the event you order the wrong size, we will sell you a replacement at 50% off. *This does not apply to accessories.*

PAYMENT OPTIONS / BALANCE DUE PROCEDURES

Payment of 50% is required to start all orders. You may also pay in full to avoid any delays in shipment.

If you have a balance:

The balance is due before your order ships. Please allow 21 business days for a check to clear. We also accept VISA®, MasterCard® and American Express®. If the order is shipped COD, a \$20 COD fee will apply and only a certified check, money order or cashier's check will be accepted.

LIABILITY

In the case of non-delivery by a specific date, Pumpers Dancewear or its affiliates will not be liable or responsible for any damages whatsoever beyond monies paid by the customer.

INSURANCE OF GARMENT(S)

Pumpers Dancewear will insure your order. We cannot be responsible for orders which are lost or damaged during shipment. We will do whatever humanly possible to assist you in handling claims with UPS/FedEx.

SHIPPING PROCEDURES

Pumpers Dancewear ships from Wichita, KS via UPS/FedEx ground. You may request faster delivery, but please be advised, additional shipping cost will apply. If you have supplied us with your e-mail address, you will be sent the tracking number via UPS/FedEx's e-mail service.

CUSTOM ORDERS / CUSTOM DESIGNS

Use our blank body form to draw on or send us photos or links to what you want. From there you will get a price quote. We always need quantities.

Custom Fabrics

For groups of 8 or more, we will look for fabric we do not stock — just for you!

Custom Sizing

We will alter, additional costs will apply.

CHOREOGRAPHERS

Diane Gans/Gigi Gans

Owner/Teacher at Kansas Dance Academy in Wichita, KS

Cindy Olznoi

Owner/Teacher at TNT Dance Studio in Morris, IL

PHOTOGRAPHER

Patti Siering Krueger
patti@kruegerclan.com

GRAPHIC DESIGNER

Michelle Abril
michelle.abril2883@gmail.com

MODELS

Maisie Olznoi
Sophie Pfaff
Lexi Espitia
Morgan White
Kiara Wesseh
Madelyn Dunne
Grace Ranallo
Maia Porteous

ALL COSTUMES ARE MADE ON LOCATION IN THE USA!



“Where your imagination becomes reality”



Pumpers gives dance teachers and studios what they want:

Customizable costumes from catalog/website!

Matching boy/men costumes, made to order!

Fabulous competition quality costumes”!

Orders that always arrive on time!

Unsurpassed customer service!

No hassle ordering!

Create what you dream and design!

www.pumpers.com · info@pumpers.com
Local (316) 263-1906 · (800) 663-3308 · FAX (316) 263-7636